

Image

The Inglis Newsletter

WINTER
2024

inglis.org

VOL. XI, NO. 1



IN THIS ISSUE

Partnership with
NewCourtland

Ponies, Dogs, & Goats –
Oh My!

New Family Council
Established

Welcome New Board
Chair

22 Years of Impact
Through Golf

Partnerships: Helping to
Shape our Community



**Ability &
Independence.
Redefined.**

Inglis Welcomes New Board Leader & Member

Alan Rosenberg was elected to his first term as Chair in June 2023. A lifelong Philadelphian, Alan has dedicated his career to healthcare, and is driven by a passion for community impact. He studied at the University of Pennsylvania and Temple Law School, focusing on healthcare law and business. This ignited his commitment to the field, leading him to Redeemer Health as the Executive Vice President for Home Care and Hospice operations, impacting Southeastern PA and Southern New Jersey.



Alan Rosenberg,
New Inglis Board Chair

Outside his career, Alan engages in meaningful volunteer work, including previously serving on boards for the Boys and Girls Club of Philadelphia and Philadelphia Works. His unwavering dedication to healthcare stems from early experiences, including working as a volunteer EMT while in high school.

Now as the Chair of the Board at Inglis, Alan remains focused on sustaining the Inglis mission and engaging with the community to create lasting changes for the disability community. For him, healthcare is more than a profession—it’s a lifelong commitment to serving others and making a difference in their lives.



Maria Beletsky,
New Inglis Board Member

Inglis welcomes Maria Beletsky as a valuable addition to the Board of Directors. Currently serving as a Business Controls Director at Catalent, Maria brings with her 15 years of experience, acquired during her tenure as a Director in PwC’s Trust Solutions audit practice. Her expertise lies in financial reporting, internal controls, and audits of both public companies and not-for-profit organizations within the Health Industries sector. Demonstrating a strong commitment to exceptional business partnership and client service, she prioritizes communication, collaboration, and responsiveness. Maria graduated from Boston University with a BS in Business Administration and holds a CPA license in the State of Pennsylvania. Her professional affiliations include membership in the American Institute of Certified Public Accountants and the Pennsylvania Institute of Certified Public Accountants.

Table of Contents

Welcoming New Inglis Executives	4
A Partnership in MS Care	5
Inglis Employment Services	6
Inglis Expands to Pittsburgh	7
Ponies, Dogs, & Goats – Oh My!	8
New Inglis House Family Council	8
Partnering with NewCourtland	9
Teeing Off for Good	10-11
Five Minutes with Jim Logue	12
Thank You to Our Donors	13-17
In Her Own Words	18

INGLIS

2600 Belmont Avenue
Philadelphia, PA 19131
inglis.org

Main Number:..... 215-878-5600
Toll-Free Number: 866-2-INGLIS (866-246-4547)
Innovation Center PHL:..... 267-295-5400
Innovation Center PGH:..... 412-790-9993

info@inglis.org
admissions@inglis.org
careers@inglis.org
community@inglis.org
development@inglis.org
housing@inglis.org
volunteer@inglis.org

On the Cover:

Residents of Inglis House in the courtyard, meeting the ponies from Pegasus Therapeutic Riding Academy.

Inglis enables people with disabilities – and those who care for them – to achieve their goals and live life to the fullest. As such, Inglis welcomes great people in all our programs and employment opportunities, without regard to disability, race, religion, age, gender, sexual orientation, national origin, military service, marital status, or any other characteristics, as protected by law. We encourage all people with disabilities who may benefit from our programs and services to apply for participation, and equally hope those who meet job criteria, including veterans and the long-term unemployed, apply for our employment opportunities.

Thank you for being our partner as, together, we help people with disabilities achieve their goals and live life to the fullest.

Our community has been built through a legacy of aligned values with individuals, organizations, and government agencies whose commitment to the Inglis mission has helped shape our impact and innovations for more than 145 years.

In this issue of *Image*, you will hear about some of the stories of our various partnerships – built on a shared vision of ability and independence for the disability community – that continue to move our mission forward. I also invite you to enjoy the FY2023 Impact Report, found in the print edition of this issue, as well as on our website, to see Inglis' mission in action and hear from some of the donors who are committed to our community.

Thank you for being our partner as, together, we help people with disabilities achieve their goals and live life to the fullest.

Sincerely,



Dyann M. Roth
President & CEO



Dyann M. Roth



Alan Rosenberg

I have been lucky enough in my lifetime to be a part of fostering the missions that I care about, both personally and professionally. My time with Inglis is no different.

I am excited to step into the role as Chair of the Inglis Board of Directors this fiscal year and look forward to building on Inglis' legacy of impact.

I am also honored to be a part of the donor community at Inglis, and I understand the crucial role my philanthropic contributions – and yours – play in delivering on Inglis' mission. I am grateful to be listed among the many contributors you will see thanked in this issue. Each of our donors is an invaluable partner in our work, elevating our programs and services that make Inglis so unique.

Our successes are yours, and for that, I am incredibly grateful.

With warm regards,



Alan Rosenberg, Esq.
Chair, Board of Directors

Inglis Welcomes New Executives

Kristen Rantanen *Chief Development & External Affairs Officer*



Kristen joined Inglis in August 2023 as Chief Development & External Affairs Officer and serves on the Executive Team. In this role, she leads marketing communications, development, government relations, and advocacy strategies to advance Inglis' strategic priorities and growth goals aligned with its mission. Prior to this role, Kristen worked in an interim capacity as Director, Marketing Communications at Inglis for three months. She is a mission-driven strategic communications executive with a passion for storytelling. Kristen has a demonstrated record of success in developing multimillion-dollar marketing campaigns, improving brand awareness, and elevating key company initiatives.

Before joining Inglis, Kristen spent more than 20 years at JEVS Human Services as Senior Vice President, Communications and Public Affairs, where she led strategy development and implementation of the organization's internal and external marketing communications, government relations, and public relations activities. She had a key role in growing the organization's donor base, spearheading their annual fundraising event, and securing millions of dollars in state and federal funds for key organizational initiatives.

She began her human services career in adult literacy and workforce development, holding several positions at Philadelphia Works, Inc. and Community Women's Education Project in the Kensington neighborhood in Philadelphia.

Heidi Bohn *Executive Director, Inglis Housing Corporation*



Heidi joined Inglis as Executive Director of the Inglis Housing Corporation (IHC) in August 2023. Heidi leads the development and

management of affordable and accessible housing at Inglis. In her capacity, Heidi serves on the Inglis Senior Leadership Team.

As a high-performing professional with more than 20 years of experience in non-profit, mission-focused affordable housing in Greater Philadelphia, Heidi has developed a solid track record for optimizing business operations to align them with an organization's missions and values. She previously served as Senior Vice President, Property Management at Columbus Property Management & Development, Inc. and as Assistant Housing Director at Pathways to Housing.

Throughout her career, Heidi has found great success by bringing value through her work ethic and team-centric mentality. From overseeing housing development, investment portfolios, leading multiple areas of business, and reshaping processes to improve operational efficiency, Heidi has developed a well-rounded set of professional abilities that spearhead her achievements.



Dr. Leist assesses resident Shelley Van Scoyoc in Inglis House's on-site MS clinic

Jefferson Health System and Inglis – A Partnership in MS Care

For more than two decades, Inglis House has had a remarkable partnership with the Multiple Sclerosis Comprehensive Clinical Center at Thomas Jefferson University. The Center, along with the Division of Neuroimmunology, utilizes an integrated approach to diagnosis and treatment of Multiple Sclerosis (MS) and other neuroimmunological disorders.

Historically, about a third of all residents at Inglis House have a primary diagnosis of MS, and along with its long-standing partnership with the National MS Society and its Delaware Valley chapter, Inglis has been recognized for its expertise and excellence in the support and care of those with MS.

That knowledge and experience is due, in large part, to the partnership and guidance of **Thomas P. Leist, MD, PhD**, the Director of the Jefferson MS Center. "To me it was a question of, how can we bring neurological care and how can we also bring subspecialty care for MS patients to Inglis House," said Dr. Leist. "How do we do that so it actually becomes safer for residents and how do we do it in a sustainable fashion? That was the beginning of the partnership," he said.

As a result of the partnership between Jefferson's MS Center & Inglis' Care Management program, an Inglis staffer is dedicated to the Center and works with

people with MS throughout the region (including at Inglis House) helping with a variety of supportive services. Inglis' Care Management team acts as connector to services such as housing, home modifications, assistive technology, behavioral health, supports for food insecurity, home care needs, transportation, and more.

Dr. Leist and his colleagues equally benefit from the partnership. "Working with Inglis House residents has also obviously given me a lot of insight into something where traditional medical training is not that rich. It's assistive technology. It's understanding the care needs of a patient at nursing home level care. And then apply this to community living patients with high disability as well," he said.

Dr. Leist and Jefferson regularly encourage younger clinicians to come to Inglis House to gain experience with people with disabilities in their home environment. Because, "if a patient from Inglis House comes to the clinic or the hospital, there is a highly disabled patient in the bed," he explained. "But if one sees the same person here at Inglis House, that patient becomes a person – no longer just a patient – but a person with abilities, capabilities, and personality. And I think that's very important."



Keen Games athletes listen to the Star Spangled Banner at the 2023 Games Closing Ceremony

The Keen Games, an Inglis Tradition

The Annual Keen Games at Inglis House is a cherished tradition since 1976 that brings joy, excitement, and a true sense of community to all involved. This fall's games, presented by **PA Health & Wellness**, were energized with a friendly, yet competitive, spirit as resident athletes engaged in events such as bowling, range, golf, Scrabble®, shuffleboard, skeeball, poker, and slalom.

Congrats to all who competed!



Barry prepares to drain some buckets



Eric accepts the Most Dedicated Athlete award at the 2023 Keen Games

Finding a Career with Inglis Employment Services

Have you ever found yourself at a career crossroad and wondered what was next?

At 20 years old, **I'shay** found herself at just that crossroad after graduating from high school in 2021. Frustrated with the job search, she turned to **Inglis Employment Services (IES)** for assistance and meeting her Inglis job coach proved to be a game-changer.

IES uses a person-centered approach to empower individuals with disabilities with skills for the job search process that stick for a lifetime: skills for seeking the right position, interviewing for and "landing" the job, securing the accommodations their disability requires, and sustaining that job independently as a valued member of the workforce.



I'shay, inspired by family working in the field, landed her first dietary tech job with Inglis' guidance. Now, several months into her new job at **Immaculate Mary Center for Rehabilitation & Healthcare**, she loves ensuring residents receive exactly the meals they want while she is prepping their trays for delivery. She loves being an important – and positive – part of residents' days and feels that she has found a calling that is likely to become a career.

Reflecting on her job search, I'shay shares valuable advice for those facing job-hunting challenges: "Never give up, go for what you are interested in, and don't be afraid to ask for help." Her story is a testament to what happens when personal goals meet the support available at Inglis.

Thirty-six-year-old **Mike** embarked on his job search with IES last February. After recovery from a herniated disc, he knew he needed a change from the more physically demanding jobs he had in the past. Inglis proved to be the right resource, at just the right time. Mike couldn't have imagined that he would find a role where he would get to use his love of history like his job at the **Mercer Museum** in Doylestown.

Mike now serves as a tour guide at the Museum, sharing his passion for history and giving insights into artifacts on display. Providing that historical context paired with his encyclopedia-like knowledge — brings the exhibits alive for guests.

His advice for job seekers underscores the importance of reaching out to resources like the PA Office of Vocational Rehabilitation and embracing the support available like he found with IES.



Mike emphasizes, "A job search is not for the faint of heart. It's all about who you know. I'm grateful to have connected with Inglis to help me open a new door to a job I love."

For I'shay, Mike, and hundreds of job seekers with disabilities, the path to fulfilling work started with Inglis.

If you or someone you know could benefit from IES services please contact us at community@inglis.org.



Mike (left) meets with Alonzo, his IES job coach



Inglis Innovation Center Pittsburgh – Open for Business

On October 21st, we officially welcomed friends and partners to the **Inglis Innovation Center Pittsburgh (IICPGH)**, located in Allegheny Health Network's (AHN) Suburban General Hospital.

With a generous grant from Highmark Wholecare, the transformative IICPGH is focused on technology, entrepreneurship, and innovation to advance accessibility, inclusivity, and independence for people with disabilities. IICPGH is home to:

- **Inglis Assistive Tech Solutions**, assessment, training, device acquisition and support for people with disabilities and older adults to use AT to enhance independence.
- **3D Printing and R&D Lab**, custom and adapted tools and solutions that enhance independence for people with disabilities.
- **The Inglis Impact Accelerator** aims to support startup businesses creating products or services that positively impact the disability community. Priority will be given to founders with disabilities.

Want to know more or to visit the IICPGH? Please contact us at Pittsburgh@inglis.org or 412-790-9993.



Guests listen to remarks during the festivities



Once designed, assistive tools are made on a 3-D printer



Tools for assistive gaming can be a doorway to increasing independence with technology



Theresa Jenkinson, Inglis and Sivashankar Sivakanthan, HURL/ University of Pittsburgh



(l. to r.) Alexis Miller, Highmark, Inc.; Ellen Duffield, Highmark Wholecare; Dyann Roth, Inglis



Jennifer Rogers, Highmark Wholecare



(l. to r.): Dyann Roth, Inglis; PA State Representative Arvind Venkat, PA State Representative Robert Mercuri, Joe Glinka, Highmark Wholecare; PA State Representative Emily Kinkad



(l. to r.) Stephen Hunter, Allegheny Health Network; Leah Marmo, Inglis; Dr. Jeffrey Cohen, Allegheny Health Network; Austin Price, Highmark Inc.

Ponies, Dogs, & Goats – Oh My!

At Inglis, we believe in the power of animal-assisted therapy to improve the quality of life for our residents and program participants. We've partnered with incredible organizations like **Pegasus Therapeutic Riding Academy**, **New Leash on Life**, and the **Philly Goat Project** to bring a variety of animals into our therapeutic programs. Whether it's caring for horses, cuddling with adorable pups, or playing with goats, our residents experience a lighthearted and fun-filled journey towards wellbeing. With these partnerships, we're creating a world where laughter and wagging tails are the best medicine.



New: The Inglis House Family Council

On July 1, 2023, an Inglis House Family Council was formally launched by family members and friends of residents who call Inglis House their home.

Guided by federal and Pennsylvania Department of Health regulations, the Family Council offers a convenient opportunity for residents' families to share experiences, exchange ideas, and participate in activities that contribute to the betterment of their lives.

Joining the Family Council is easy and requires only a willingness to receive periodic updates about Inglis House Family Council events and activities that may be relevant to your family.

Call the Family Council at **(215) 732-0326** – or take a moment to scan the QR code with your phone or visit us online at **InglisHouseFamilyCouncil.org** to add your email address to our list.

Editor's note: The Family Council is wholly formed and led by family and friends of Inglis House residents.



Partnering with NewCourtland to create a new kind of community!

Since Inglis began creating affordable, accessible independent-living housing in 1974, one key element has been developing partnerships – with funders like the Pennsylvania Housing Finance Agency, social service organizations like Methodist Services, and housing developers like Conifer Realty and HumanGood.

Partnering has become the watchword as the need for affordable and accessible independent-living housing continues to grow exponentially. Though Inglis was often on its own when developing accessible housing communities in the past, we know we are always stronger together. Joining with others to help create safe, affordable, and accessible housing

with associated services such as assistive technology, social, mental health, wellness, and other supports always works better and creates stronger communities

“Our goal is to get as much affordable and *truly* accessible housing out there as possible,” said Dyann Roth, President & CEO of Inglis. “We will continue to look at all strategies available to achieve that goal. One of the best ways is partnering with developers who are building communities in which we can help guide the integration of accessibility into those developments. We can get a lot more done that way, the need is too great,” she said.

Over a year ago, **Inglis Housing Corporation (IHC)** began working with **NewCourtland** on an inclusive housing development, **The Tower at Henry Avenue**, in the East Falls neighborhood of Philadelphia. NewCourtland is a non-profit operator and innovator of affordable senior housing with supportive services for medically complex seniors. Inglis helped design and will lease-up 20 accessible apartment units in the planned 173-apartment complex that will be highly desirable to a diverse tenant base consisting of low-income seniors, people with disabilities, young professionals, families, and empty nesters – creating an equitable housing environment.

“NewCourtland is excited to be working with the team at Inglis to create an innovative and inclusive housing community at Henry Avenue in Northwest Philadelphia,” said Joe Duffey, President & CEO of NewCourtland. “Inglis brings essential expertise in accessibility and customized, goal-based assistive technology services for our residents seeking to increase independence and social engagement,” he said.

The accessible units designed by Inglis adhere to Inglis’ accessibility protocols that far exceed standard compliance with the Americans with Disabilities Act. Additionally, all the Inglis units will be further equipped with smart home technology for enhanced independence.

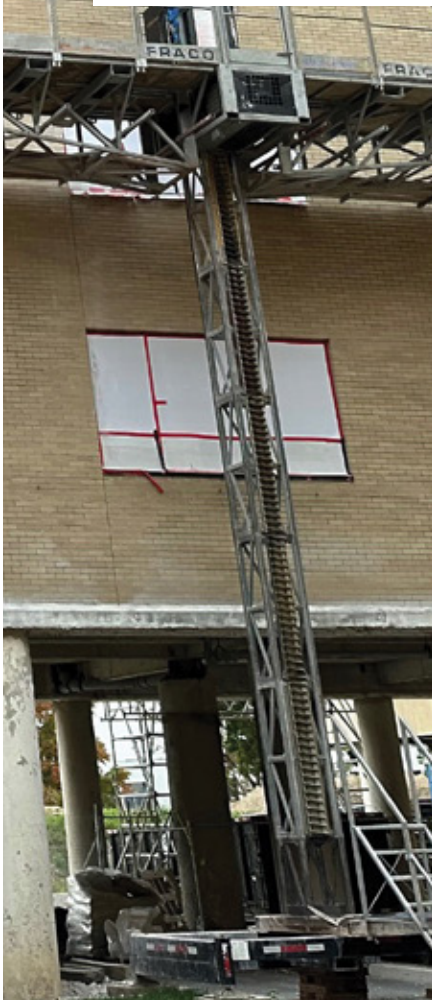
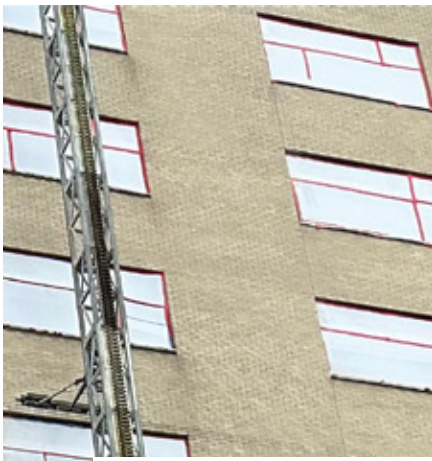
“NewCourtland has been and continues to be a wonderful partner,” said Dyann. “They are not just a top-tier housing developer, they are a very mission-focused housing and services provider who cares deeply about those they serve. There is a wonderful alignment in our organizations’ approach,” Dyann said.

The Tower at Henry Avenue, which includes the Inglis units, is expected to open Fall 2024.



(l. to r.) Inglis’ Kristen Rantanen, NewCourtland’s John Ungar & Max Kent, Inglis’ Lynn Stewart-Krieger, Dyann Roth, Meredith Waldron, and Heidi Bohn

Partnering has become the watchword as the need for affordable and accessible independent-living housing continues to grow.



Teeing off for good

Inglis celebrates the legacy of the annual golf outing

Twenty-two years ago, a group of dedicated volunteers came together to visualize future special events for Inglis. Since then, the annual Inglis Golf Outing has made an immeasurable impact on the Inglis Community, bringing together Inglis' residents, service recipients, volunteers, and friends year after year for a day of fellowship and generosity.

Having wrapped up this great event to focus on inclusive new ways to engage the Inglis Community, we are so grateful for the impact this event has made. Thank you to those who've served on the Inglis Golf Outing Committee over the years— we couldn't have done it without you!

2002



2003



2004



2005



For the first several years, the goal of the outing was to fundraise and friend-raise, bringing awareness to the Inglis Community's needs for donor support.

2015



Making connections in 2015! The outing upgraded the wifi network on our main campus, drastically improving connectivity for Inglis House residents.

2014

2016



Person-centered care takes shape thanks to a golf-funded neighborhood transformation at Inglis House.

2017



2018



The Inglis House resident salon gets a much-needed makeover in 2018.

2019



The Inglis Innovation Center Philadelphia becomes Inglis' first campus dedicated to its community-based services.



2006



2007



Golf committee members “break ground” on the new Wellness & Rehab Center at Inglis House, funded in part by the 2013 and 2014 outings.



2013



2008



Starting in 2008, the outing began raising funds for specific programs or capital needs.

2009



2010



All aboard! The 2010 outing purchased a new accessible van for Inglis House resident trips and outings.

2012



In 2012, the new courtyard fountain and garden room enhances the Inglis House campus thanks, in part, to the outing.

2011



2021



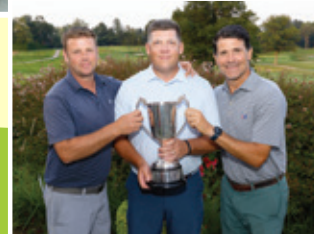
Coming back strong in 2021, the outing establishes a scholarship fund to provide assistive tech services to individuals with disabilities.

2022



In 2022 and 2023, the outing established The Inglis Independence at Home Fund to help people with disabilities stay in their homes.

2023



Five Minutes with Jim Logue

Jim Logue closed out fourteen years as an Inglis Board Member in 2023.

For more than three decades, Jim has been a dedicated Inglis volunteer. That dedication extended well beyond his service on the Board. He began as part of the cheering crowd at the Keen Games; then helped host parties for residents at Inglis House with the A-MayZing Committee (known for the events held in May each year); then joined the Golf Outing Committee as it was getting started.

Each opportunity brought him closer to Inglis' mission and the incredible people Inglis serves. Now Director Emeritus, the former Board Chair shared his thoughts about his time with Inglis and his hopes for the future.

Thirty-six years as an Inglis volunteer is a long time. How did you first come to Inglis, and what made you stay?

In September 1987, a former law partner of mine asked me to attend the Keen Games with him. While I lived in this area most of my life and had driven by Inglis House hundreds of times, I only knew just a little about the organization.

I was captivated by the residents and their enthusiasm, the staff, and the family members. I just loved it, and shortly thereafter I started volunteering.

What are you most proud of from your Board tenure?

Serving on the Inglis Board was a huge privilege and honor. One of the things I will cherish the most is the friendships I've built over the years with the people we serve. They know me and I know them.

In addition, when I think about the Inglis I first "joined" 36 years ago and the one now, with a scope and breadth across the entire commonwealth of PA, I think how incredible that is. Not because it happened during my tenure, but because it shows you what hard work, creativity, and a focus on mission can do.

I'm also proud of how, as a team, we collaborated at every turn, not only with fellow Board members but also with the

leadership team. It was all quite a bit of work, and I loved giving back at every turn. As a child, my parents instilled in me that you have to give to get, and that philosophy has always been high on my list of priorities.

What are your hopes for the future of Inglis?

I remain optimistic about the future and the work to do in the months and years ahead. There are significant challenges that are outside of Inglis' control, and I personally feel our government at every level needs to do a better job in healthcare – because every community has needs like those Inglis addresses. I think as a country and as a world we need to do better.

Now that your fourteen years as an Inglis Board member have come to a close, what do you plan to do next?

Nothing will replace this experience – Inglis will always be near and dear to me and I hope when I ultimately retire that I can find some kind of Board service where I can continue giving back.

Every now and again I hear a phrase that really resonates with me: "Love what you have before life teaches you to love what you lost." I plan on doing just that.



At the March 2018 Art Show with (l. to r.): Jim, Meredith Waldron – Sr. Director of Development, Shelley Van Scoyoc – resident of Inglis House, Jackie Bokunwicz – Dir. of Therapeutic Life & Enrichment, and Marie Logue

Is there anything else you would like to share?

I am hugely fortunate to have had the support in my personal and professional life of my wonderful spouse, Marie, who is also passionate about Inglis' mission, as well as colleagues at work who gave me the leeway to devote as much time as I have to Inglis over the years. I think Inglis is in good hands, and I hope nothing but success for the entire Inglis Community.



At 2016 Keen Games with (l. to r.): Jim, Gavin Kerr – former Inglis President & CEO, late Gina Minter – former resident, Dixie Wigton – former Inglis Board Chair, Gordon Keen, Lauren DeBruicker – former Inglis Board Chair



Marie and Jim Logue



Ability &
Independence
Redefined.

Support for the Inglis Community

Annual gifts to the Inglis Community provide essential support to help our residents and service recipients achieve their goals and live life to the fullest. Your gift has an enduring impact on those we serve today and in years to come. This report includes contributions received from July 1, 2022 to June 30, 2023. Inglis is especially grateful to recognize those donors in bold who have consistently supported the organization for ten years or more.

\$100,000+

Craig H. Neilsen Foundation
Estate of Lewis Elkin

Hess Foundation, Inc

Highmark Wholecare
Estate of Emilie J. Klahr
Estate of Emma L. Warne

**Dr. Sankey V. and The Honorable
Constance Williams**

\$50,000+

Estate of Alexander M. Fox, Jr
Estate of Lydia Jones Fitch
Estate of Julia M. Haas
Estate of Jacob E. Heyl

\$25,000+

Leonard Hastings and Suzanne
Schoff Trust
Lincoln Financial Foundation, Inc.
Estate of Lillian L. Longstreth
Estate of Helen M. Lukens
Pennsylvania Housing Finance
Agency
The Philadelphia Foundation

\$10,000+

Blossom Philadelphia
Capital One Investing for Good
Estate of Edward and Mary Dobbins
Mr. and Mrs. James P. Gaffney
Goshen Mechanical, Inc.
Mrs. Clara C. Harrell
Estate of Samuel Kilpatrick
Mr. and Mrs. James G. Logue+
Mr. and Mrs. Martin Marbach
The McCausland Foundation

Mr. and Mrs. Peter McCausland
**Drs. Carol M. Pate and
John L. Melvin+**

National Multiple Sclerosis Society
**Oscar H. and E. Ida Iucker
Memorial Fund**
Estate of Louis B. Richards
Estate of Ralph T. Sterling
**William A. Sullivan and Eugenie
Hummel Sullivan Fund**
Mrs. Robert W. Wigton, Jr.+

\$5,000+

Anonymous (2)
BrightSpring Health Services
Flatiron Building Company
Estate of Samuel Frank
JoAnne T. Fredericks, CFA
The Katie Samson Foundation
KMRD Partners, Inc.
Estate of Annie L. Lowry
Marsh & McLennan Agency
Morris Charitable Trust
Mr. Michael Morris
Mr. and Mrs. R. J. O'Neil
PA Health & Wellness
**Ray of Hope International
Foundation Inc.**
Dyann M. Roth+

\$1,000+

365 Health Services, LLC
Accessibility Solutions 360
Aculabs Inc.
All4, Inc
AmeriHealth Caritas
Mr. Andrew Armstrong

Mr. and Mrs. Stephen W. Bajus
Baker Tilly Virchow Krause, LLP

Ms. Lois T. Belber
Ms. Melanie Bella
Mr. and Mrs. Mark Bowden
Brookmead Construction
Mr. Randall Brown
Mrs. Jennifer Bruder Lavin
Mr. and Mrs. James J. Bruder, Jr.
Mr. Richard A. Campion
Mr. John Chapman
Mr. Edward C. Cialella

Ram A. Cnaan, PhD

Mr. Raymond Collins

Mr. and Mrs. Mark A. Cooper

Lauren E. DeBruicker, Esq.+
Dolfinger-McMahon Foundation
Domus Inc

Drummond Scientific

**Ms. Anwesha Dutta and
Mr. Hemang Desai**

Engle-Hambright and Davies, Inc

Ms. Justine D. Englert

**Ms. Catherine H. Farrell+ and
Mr. William Wertheimer**

Mrs. Jayne C. Finegan

Mr. and Mrs. James Flatt
Estate of George A. Garrett
Dr. William A. Gaul

**Mr. and Mrs. Bernard J.
Halfpenny, Sr.**

The Haney Foundation Trust

Mrs. Beverly Hattersley

Mr. Robert F. Henderson

Doctors Richard and Christina
Herring
Mr. David Himmelreich

Estate of Ann K. Horner

Mr. and Mrs. Tom Huff

Mrs. Ann M. Hunter

Estate of Patricia Irvine

Mr. and Mrs. Aram K. Jerrehian, Jr.

Mr. and Mrs. John A. Johnson

Mr. and Mrs. Paul E. Kelly

Mrs. Jeannie Ellen Knowlton

Mr. and Mrs. R. Andrew Knowlton

Mr. David B. Lafferty, CFP

Larking Hill Foundation

Mrs. Jennifer Bruder Lavin

Mr. and Mrs. William T. Lawrence

Drs. Judith and Thomas P. Leist

Mr. and Mrs. Mariano Leo

Liberty Private Client

**Mabel Bayard Fund of the
Philadelphia Foundation**

Samuel P. Mandell Foundation

Marquis Health Consulting Services

McCausland Keen + Buckman

Mr. and Mrs. John S. McManus, Jr.

Mechanical & Service Contractors
Association of Eastern PA

**Michael J. & Patricia Levitt Family
Charitable Foundation**

The Mill Spring Foundation

John Murphy and Thomas Ayers+

Nationwide Life Insurance Company

Mrs. Tricia Nolen Sims

Open Systems Healthcare

Paul E. Kelly Foundation

Mr. Robert Pearce+

The Philadelphia Contributionship
PMHCC, Inc.

Mr. and Mrs. John H. Prince+

Ms. Joanne Proschinger

You can make an impact with your gift today. Use the envelope in the center of this newsletter or visit inglis.org/donate

Support for the Inglis Community *continued*

\$1,000+ *continued*

Dr. and Mrs. Edward Rabbitt
Regan Development Corporation
Regional Legal Housing Services
Estate of Joseph G. Rittenhouse, Jr.
Mr. Theodore Robb+
Dr. Marisa A. Rogers and
Mr. Eston Griffin
Mr. and Mrs. Patrick Rooney
Mr. and Mrs. Theodore A. Rosen
Mr. and Mrs. Alan N. Rosenberg
Dr. and Mrs. Fady B. Sahhar
Samuel Tabas Family Foundation
Rhoda and Stephen Sand
The Scholler Foundation
Mr. and Mrs. Richard B. Seidel
Mr. and Mrs. John L. Sly
Estate of Elizabeth Wandell Smith
Mr. and Mrs. Michael J. Stapler
Ms. Susan F. Starr+
Steamfitters Local Union 420
Strategic Systems of New Jersey, Inc.
Estate of Henry Stuebner
Edna Thomas Memorial
Charitable Trust
Mr. and Mrs. Chuck Thomas
Mr. and Mrs. Christopher Tretina
Mr. and Mrs. Gary P. Tretina
UPMC Health Plan
Mr. and Mrs. John R. Voegelé, Jr.
Meredith and Greg Waldron
Wawa Foundation
Ms. Deborah Holt Weil
Anita Weinberg+ and Lawrence
Goldberg
Wescott Financial Advisory Group
Ms. Cheryl Whitfield
Dr. Janet Widra and Mr. Alan Widra

\$500+

American Health Care Services, Inc.
Mrs. Ina E. Asher
Ms. Maxine Bates
The Berry Family Foundation
Mr. Gary D. Bramnick+

Ms. Maripeg M. Bruder
Mr. and Mrs. James M. Buck, III
Mr. and Mrs. Nicholas W. Carper
Dr. Shiva Chandrasekaran
Ms. Stacey Cherry
CIGNA Corporation
Community Foundation of Greater
Fort Wayne
Mr. Michael Cook
Mr. and Mrs. Gary Daniels
Diamond & Associates
Duane Morris Government
Strategies LLC
Mr. and Mrs. Paul J. Finley
Mr. and Mrs. Joseph Frontino
Mr. Ross Gilfillan
Mr. Patrick Gillespie
Holz Brothers
Ms. Patricia H Imbesi
Ms. Theresa Jenkinson
Key Business Solutions
Mr. Byron Kline+
The Lancaster Group, LLC
The Levitties Foundation
Mr. and Mrs. Peter Linneman
Dr. and Mrs. Joseph Loscalzo
Mr. and Mrs. Edward F. Martin, Jr.
McKonly & Asbury, LLP
Mr. Marc D. Miller
Ms. Linda M. Moore
Mr. and Mrs. William Moore
Mr. Thomas Nerney
Mr. and Mrs. Gary Orvieto
Passover League of Philadelphia
Mr. Courtney Pitt, Jr.
Mr. and Mrs. Douglas H. Pyle
Dr. and Mrs. Mario Rafalin
Mr. and Mrs. David K. Ray
Mr. and Mrs. Tom A. Seifert
Dr. Suzanne C. Smeltzer, RN, EdD
Ms. Chris Koustourlis and
Mr. Kel Smith+
Walter J. Cook Jeweler, Inc.
Workplace Central
Zeldin Family Foundation

\$250+

Anonymous
Mr. and Mrs. David Beatson
Ms. Anastasia Buccino-Roth
Ms. Sharon Castillo
Chancy Memorial Foundation, Inc.
Mrs. Dorothy H. Clapham
Mr. and Mrs. Birchard T. Clothier
Comcast Corporation
Mr. Michael Corradi
Mr. Pat Croce
Mr. and Mrs. Alan Dore
Ms. Lori Feller
Mrs. Chris Fontanot
GE Foundation
Mr. Paul Gervais
Mrs. Lucy Giametta
Mr. and Mrs. David I. Haas
Dr. Christopher L. Hansen
Mr. and Mrs. James A. Heldring
Dr. Benjamin A. Inglis
Ms. Catherine L. Larson
Laura J. Hornberger Fund
Mr. Joseph J. Liciardello
Ms. Margery H. McGann
Mr. and Mrs. F. Paul Mita
Mr. Kevin M. Moffitt
Ms. Pamela Morris-Barnhill
Mr. and Mrs. Phil Mowrey
Mr. Perry O'Grady
Perlstein Law
Mr. and Mrs. Paul M. Perlstein
Mr. and Mrs. Gary J. Tanner
The Progressive Insurance
Foundation
Mr. Laurence Reilly
Mr. Anthony Russo
Ms. Phyllis Chancy Solomon
Mr. Francis Edward Stein, Jr.
Mrs. Margot A. Sullivan
Mrs. Virginia Unger
Mr. and Mrs. Robert D. Vernot
Lee and Bill Warden
Mr. and Mrs. William G. Warden, IV
Wegman's King of Prussia

\$100+

Anonymous
Ms. Kathleen Albright
Ms. Elizabeth Goldmuntz and
Dr. Frederic Barr
Mr. Mark W. Batty
Mr. and Mrs. Jake Biondi
Mr. and Mrs. Robert Bryan
Mr. Paul Burke
Mr. and Mrs. Francis J Calter
Ms. Emily Camacho
Caryl E. Carpenter, MPH, PhD
Ms. Jean E. Carr
Mr. and Mrs. William Carrion
Ms. Roberta Carroll
Mr. and Mrs. George Cherian
Mr. and Mrs. Ken Clark
Mrs. Lauren Clement
Mr. and Mrs. Richard E. Craft Sr.
Mr. and Mrs. Richard E. Craft
Mr. John Philip Crampton
Mr. and Mrs. Mark H. Dambly
Mr. and Mrs. Alfred J. D'Angelo, Jr.
Mrs. Brenda Davis
Mr. and Mrs. Ernest J. Dellheim
Mr. Wayne A. Deppen
Ms. Linda J. Duckenfield
Mr. and Mrs. Frank Duffy
Ms. Susan Eiseman
Drs. Elizabeth and
Charles Emerson
Mrs. Cecelia English
Ms. Caryn Finegan
Mr. and Mrs. Dick Flanigan
Ms. Constance Flanigan
Mrs. Beth Brown-Ghee and
Mr. David Ghee
Mr. Thomas J. Giamoni
Mr. Robert Gillespie
Estate of Tonyetta Glenn
Ms. Terry Green
Mr. John Grillone
Mr. and Mrs. Chris Hamilton
Ms. Nancy G. Harris
Mr. and Mrs. Robert P.
Hauptfuhrer

\$100+ continued

Mr. and Mrs. Michael Heisler

Mr. and Mrs. Michael Hennessey

Mr. and Mrs. Michael Higgins

Mr. George Holland

Ms. Kathleen Hopkins

Mrs. Sandra Hyland

Ms. Evelyn Isom

Mrs. Allison James

Mrs. Carol M. Jones

Mrs. Lois Kendall

Ms. Nancy J. Kirby

Mr. Arlan Koch

Mr. and Mrs. Judson D. Laverell, II

Ms. Jeanmarie Lee

Ms. Katherine Lester

Ms. Denise Lewis

Mr. John Lutz

Stephanie and Joe Maguire

Dr. Rhonda Mandel

Ms. Gina M. Mazzulla

Mr. and Mrs. Daniel J. McAnally

Mrs. Susan McAnally

Mr. Dan McClave

Jean McCoubrey, AIA

Mr. and Mrs. Robert J. McNeill

Mr. and Mrs. John L. McShea

Mr. Randy Mineo

Mr. and Mrs. James P. Moore

Ms. Charissa Morningstar

Mrs. Teresa Morrison

Mr. and Mrs. Robert H. Morro

Mr. Jeffrey Moyer

Mr. and Mrs. William S. Newlin, Jr.

Mr. and Mrs. Stephen Nitz

Northern Kentucky Convention
Center Corp

Mr. and Mrs. John O'Neill

Mr. and Mrs. Kevin J. O'Neill

Ms. Kristin Packer

Mr. and Mrs. Donald F. Parman

Ms. Theresa Pente

Mrs. Gianna Pierce

Mr. Blaine Price

Danielle and Mike Quinn

Railsbank

Mrs. Patricia Reynolds

Mr. Bryan Rowland

Mr. Robert S. Ruane

Ms. Zanetta M. Ruffin

Mr. Thomas Ruggiero

Mr. and Mrs. Charles A. Sammartino

Mr. and Mrs. Mark Santerian

Sarah Tremells Trust

Mr. and Mrs. Tom Scannapieco

Mary Ellen and Bob Scott

Ms. Eugenia Shane

Mr. and Mrs. Guy D. Silva

Ms. Rachel Simon

Mr. Brian Skellan

Michael Sklaroff, Esq.

Mr. David Skolnick

Ms. Teresa Smink

Sokol Family Foundation

Dr. and Mrs. David Sokol

Mr. and Ms. Michael B. Solomon

**Drs. Nancy B. Spinner and
Ian D. Krantz**

Mr. Gregory W. Stanczak

Ms. Paulette M. Steffa

Mr. Scott Stein

Dr. and Mrs. Marvin E. Steinberg

Ms. Tasha Stonorov

Ms. Ashley Urjil-Mills

Ms. Julia VanDerBeek

Mr. and Mrs. Carey M. Verger

Ms. Marita L. Wagner

Dr. Roberta Walker

Mr. Daniel J. Walsh, III

Wednesday and Weekend Golf

Ms. Sarah T. Werntz

Ms. Ann L. Wertz

Mr. William A. Wexler

Mr. and Mrs. David White

Mr. Tom Wickersham

Ms. Cecilia Tanhia Williams

Mr. and Mrs. John Murray Wilson

Ms. Gertrude Wood

Ms. Jane D. Young

+ Annie Inglis Society * Deceased



Why I Give One Donor Shares His Story

Dr. Thomas Leist, a highly respected neurologist and an expert in supporting people who have multiple sclerosis, has not only been a staunch clinical partner at Inglis House but has also been a long-time donor. During a recent visit, Dr. Leist shared why he invests in the Inglis mission.

"I view Inglis as a community of individuals who have disabilities, yes, but they also have abilities. And I hope that with contributions we can make sure that they have access to technologies and opportunities to pursue."

Independence for people is key, shared Dr. Leist, and the Inglis programs that enhance the quality of a person's life are "above and beyond" a typical

long-term care facility. Thanks to donors like Dr. Leist, Inglis is able to offer robust programming, including events, classes, and trips that enrich everyday life at Inglis House. One such unique opportunity is Inglis' extensive Assistive Technology Program, which at Inglis House offers a state-of-the-art Computer Lab, group education opportunities, in-room tech support, and 3-D printing.

As for being a donor at Inglis, Dr. Leist shared, "Sometimes you need to put your dollars where your mouth is. It's enriching for all of us who come here."

Thank you Dr. Leist for being such an important part of the Inglis Community!

Annie Inglis Society

Individuals who chose to include Inglis in their estate plans are recognized as members of the Annie Inglis Society, joining a thoughtful group of people whose generosity has a lasting and profound impact on the organization.

Anonymous (2)
Ms. Lisa Marie Abriola
Mr. and Mrs. Edgardo E. Agustin
Dr. and Mrs. Richard P. Borkowski
Mr. Gary D. Bramnick
Mr. and Mrs. Joseph Brazino
Ms. Nancy A. Colbaugh
Lauren E. DeBruicker, Esq.
Ms. Alysse Einbender
Ms. Laura Emerson
Ms. Catherine H. Farrell
Mrs. Mary Ann Flanigan*
Estate of Tonyetta Glenn
Mr. John Hanamirian
Mrs. Neal (Trish) Johnson
Mr. and Mrs. Gordon L. Keen, Jr.

Ms. Sandra Payne Kenton
Cindy and Gavin Kerr
Mr. Byron Kline
Mrs. Louanne Lemke
Mr. and Mrs. James G. Logue
Ms. Betty J. Marmon
Mrs. Jorja L. Mathers
Drs. Carol M. Pate and John Melvin
Mr. Frances E. Middlemore
William Millhollen and Lenore Priest Millhollen
John Murphy and Thomas Ayers
Mr. and Mrs. Leonard Nachbar
Ms. Elizabeth G. Nathans
Mrs. William F. Nugent
Mr. Michael A. Panunto, Sr.
Mr. Robert Pearce

Mr. and Mrs. John H. Prince
Mr. Theodore Robb
Dyann M. Roth
Mr. Scott W. Sanderson
Ms. Johanna Schiavo
Won and Dana Shin
Mr. and Mrs. John L. Sly
Ms. Chris Koustourlis and Mr. Kel Smith
Susan F. Starr
Janet Ries Stern and Matthew B. Stern
Joseph and Lorraine Tumolo
Anita Weinberg
Mr. and Mrs. Charles Kimball White
Mrs. Robert W. Wigton, Jr.
Mr. and Mrs. James C. Woolsey

+ Annie Inglis Society * Deceased

Make an Impact All Year

A monthly gift at any level toward the Ability Fund, the annual fund of Inglis, provides meaningful year-round support to the programs and services that enable people with disabilities to achieve their goals and live life to the fullest.

To make a monthly gift to the Ability Fund:
Return the enclosed envelope and select
"I would like to make this gift a monthly contribution"
or visit us online at www.inglis.org/donate



Gifts in Kind

Gifts in kind help members of the Inglis Community have access to tangible items, such as new clothing, unopened toiletries, electronics, and more.

Brown's Super Stores
Ms. Denise Lewis
Marquis Health Consulting Services
Dr. John L. Melvin
Mrs. Joan Nevius

NGA, Inc.
Ms. Susan F. Starr
Mr. Tom A. Seifert
Wegman's King of Prussia
Ms. Anita Weinberg and Mr. Larry M. Goldberg

Memorial and Tribute Gifts

Many supporters of Inglis make donations in honor of or in memory of friends and family. While commemorating a loved one, these thoughtful gifts also enrich the lives of many throughout the Inglis Community.

Gifts in Honor of

Susie Auten	Denise Guest	Kathleen J. Moore	Stephanie L. Shea
Gary D. Bramnick	Barbara Hnizdo	Barry L. Moyer	Robbie Shell
Frances L. Brown	Ellen Hunter	Mark J. Murray	Judy Slagoff
Lauren E. DeBruicker	Joyce Kensey	Tyrisha Parker	Rosemary Smith
Mark Dressler	Joanna L. Krupp	Walter Proschinger	Christopher Stein
Laura Emerson	James G. Logue	Danielle Quinn	Sankey V. Williams
Joan Gallagher	Gabriel Maioriello	Luisa M. Rabe	Ian C. Zavodnick
Tracey Goldsmith	John D. Mazari	Mark A. Ramsey	
Kevin Goslee	Robert McGrody	Dorothy M. Russo	

Gifts in Memory of

Raulston Abernathy	Thomas Hennessey	Denise March	Harvey T. Sayen
Ethel L. Armstead	Dorothy A. Higgins	Jean Margaret	Cynthia A. Shaw
George Baker	Susan Hirsch	Vivian Marzzacco	Melissa Slater
Catherine Bates	John W. Irvine	John Merkins	Deborah Smith
Patricia Bodo	Patricia Irvine	Joan Miller	Gregory Smith
Carmela E. Bond	Neal Johnson	Gina Minter	Eliot Spindel and
Emma Branch	Coryne Jones	Edward V. Murray	Robyn Korey Spindel
Barbara S. Clayton	Joseph M. Jones	Rosemary Murray	Steven H. Starr
Joseph Coleman	McKay Jones	Robert Nolan	Louis J. Steffa
Virginia A. D'Arcy	Veronica Jones	David O. Oberkircher	Donald Sugarman
Andrew Duckenfield	Karen Josey	Gina L. O'Neill	Helena Truite
Donna Duckenfield	Joan M. Kling	Joan E. Pasternack	Fred A. Tucker
Paul G. Finegan	Jean M. Knowlton	Stephanie Pearce	Marie Turnbull
Rosalyn Fischer	Richard E. Knowlton	Richard V. Pinera	Carl Voce
Mary Ann Flanigan	Marvin Krane	Walter Proschinger	David A. Walker
Robinson Fredenthal	Coleen Krause	Norman W. Reilly	Beatrice Wexler
Mary Anne Gaul	Paul B. Kuper	Linda Rojahn	Steven J. Wilson
Lisa C. Golden	Janet Liciardello	Linda H. Rothman	Bernard Woldar
John P. Gregg	Linda Lipton	John Ryan	Paul Woltanski
Aurora Grifon	Mary J. Long	Maurice and Ida Sand	Sybille Zeldin
Maryann Hengen	Joanna Manusov	James L. Sanderson	Katherine S. Zoidis

The contributions of the generous donors listed throughout were received between July 1, 2022 and June 30, 2023. While this list reflects gifts of \$100 or more, Inglis greatly appreciates the dedicated donors who support us at all levels. We have carefully reviewed all names. However, if your name has been accidentally misspelled or omitted, please call Danielle Quinn, Annual Fund and Stewardship Manager, at (215) 581-0753, or send an email to Danielle.Quinn@inglis.org.



In Her Own Words

Barbara found her community with Inglis

A resident in one of Inglis' affordable, accessible housing communities in the Greater Philadelphia area, Barbara shared with us just how much it means to finally be home.

I was living with my daughter. It was nice living with family, but she has front steps, as well as ones inside. I use a walker and going up and down the steps frightened me. I was always afraid of falling; it was time to leave.

The apartment building was so well kept and clean, but I fell in love with my apartment because it faced the trees on two sides. I have all these trees and bushes. There is a family of deer, about six of them. There is also a red fox, a funny little fat thing. I really enjoy watching things like that.

I have Alexa, or as I like to call her my "electronic daughter," integrated into my apartment. "She" controls the lights in my kitchen in the morning, and the thermostat. I can also open and close my blinds using my phone. I wasn't part of the technology generation, so all of this is new to me. But I love learning about this technology and all the things it can do. It just makes me feel good to know at my age I can use it.

The apartment really feels like home and the folks here are happy and kind. There is a beautiful community room that I can socialize in. On Tuesdays and Fridays, a group of us meet to crochet together. I crocheted before moving, but always on my own. Now that I can talk and interact, I like it so much more.

I am thankful that I have a place like this to live. A place, if I am being honest, I can live in until I take my last breath. We need so many more buildings like these, small, decent, low-income housing units. A building that is a community.

Welcome to your forever home, Barbara. We're so glad you're here!

Opening Doors Together

Accessible Housing: A Human Right

**Inglis and SDHP's
Statewide Housing Conference**

**Save the Dates!
June 11-12, 2024**

**Best Western Premier
Harrisburg, PA**

**RFPs for Breakout
Sessions Coming Soon**



VISIT

**Inglis.org/OpeningDoors24
TO LEARN MORE**

Help Support the Impact of Home!

Home is more than its structure; it's a space to hold our memories, our identity, and our dreams. Inglis understands the profound impact that housing has on individuals with disabilities, and is working to help people find and stay in their home.

Your generosity is invaluable to this work. Make a gift today to the Ability Fund, the annual fund of Inglis, by visiting www.inglis.org/donate or scanning the QR code below.



Believe in the power of choice.
Inglis.org/donate





**Ability &
Independence.
Redefined.**

2600 Belmont Avenue
Philadelphia, PA 19131

NON-PROFIT
U.S. POSTAGE
PAID
PERMIT NO. 1102
PHILADELPHIA, PA



JOIN US FOR THE

Inglis BASH

Friday, May 3, 2024

5:30—VIP Reception

6:30—Cocktails, Dinner & Stories of Impact

National Constitution Center

525 Arch St, Philadelphia, PA 19106

RSVP at Inglis.org/bash

Tickets Required