



Housing as a Human Right

Elevating Accessible Solutions



Affordable
Housing
Using Hemp



DON, From "A" to "H"...



Group of 7 Entities
Mostly Non-Profits
Work in Various Sectors
Launched in 2002
Operate in 9 Counties
Employ nearly 1,000 people





Our Story Begins with Disability Rights Advocacy...



2002

Disability Options Network
(DON)

2005

DON Services Inc.



Which Led to Affordable, Accessible
Housing (DON Enterprises, INC 2011)



BUILDING NEW CASTLES

A New Castle Blueprint Communities Project

Builders and General Contractors:

DON Enterprises, Inc. / DON Management, Inc. / T.W. McCosby, LLC

Architects:

Eckles Architecture

Community Partners:

Lawrence County Redevelopment Auth.	Lawrence County Land Bank	Bible Way Church of God in Christ
Arts and Education at the Hoyt	County of Lawrence	Caroline Knox Memorial Trust Fund
First Commonwealth Bank	City of New Castle	Almira Foundation
Lower East Side Neighborhood Watch	Columbia Gas	Lawrence County Comm. Foundation
New Visions for Lawrence County	Penn Power	Tri-County Cleanways
United Way of Lawrence County	LCCAP	Neighborhood Legal Services Assoc.
Lawrence County Board of Realtors	Lowe's	Regional Legal Housing Services

With a
Collaboration
of
Community
Partners...

To Bring a New Approach...

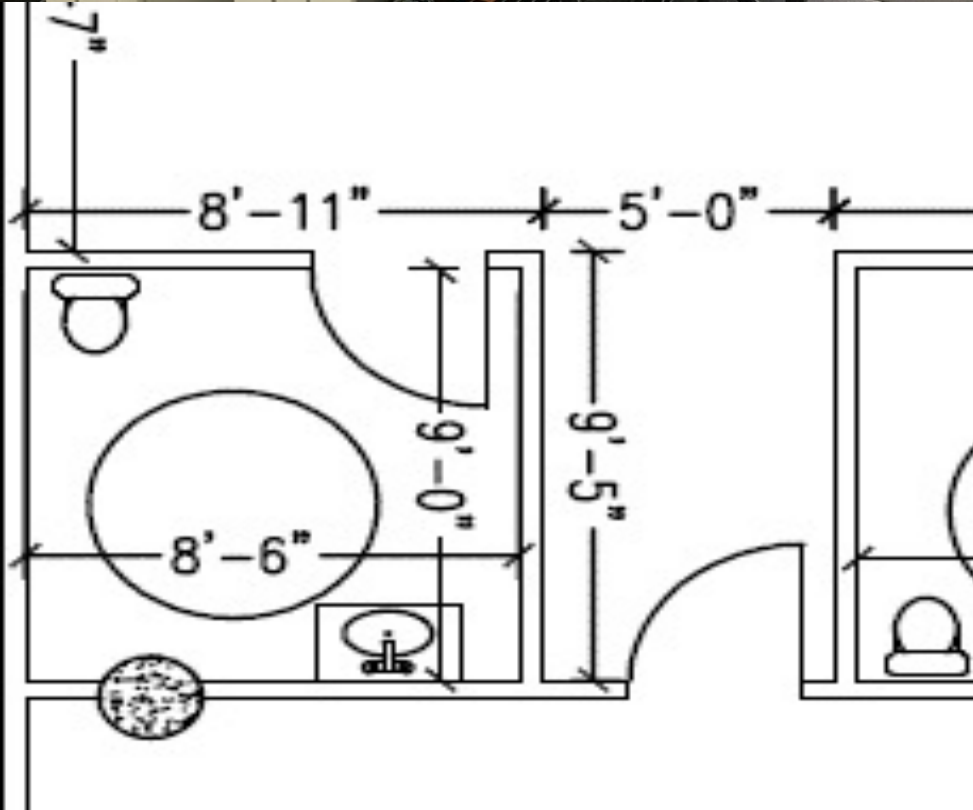
- Accessible, able to age-in-place
- Mid-grade materials, working towards healthier options
- For people with low or very low incomes, often people with a disability, can include those fleeing domestic violence
- Purposely a mix of singles, families, and seniors with diverse backgrounds, education levels, professions—our project is NOT about gentrification
- Made affordable with grants for gap funding



Which is Solving a Blight Problem and
Creating Jobs...



Not only for
People with
Disabilities...



Which Expanded into
Commercial District
Revitalization...



And Brought
us to Hemp for
Agricultural
Economic
Revitalization...

Everyone should win—
Farmers, Investors, and DON

Can Affordable Homes Afford to Use Hemp?

The Not-So-Good News: Not yet, at least for widespread, mainstream use

The Good News: The industry is gaining traction quickly, there are several paths forward, DON's path is one example

DON has always looked to bring innovation and out-of-the-box thinking to our work.

The Solution to the market Bottleneck is Decortication...





2019: Hemp Test Acres Program is Launched

Excellent Learning
Opportunity!

2020: Great Progress





2021: Continued Learning

2 States, Pennsylvania and Ohio

7 Farmers, 26 Acres

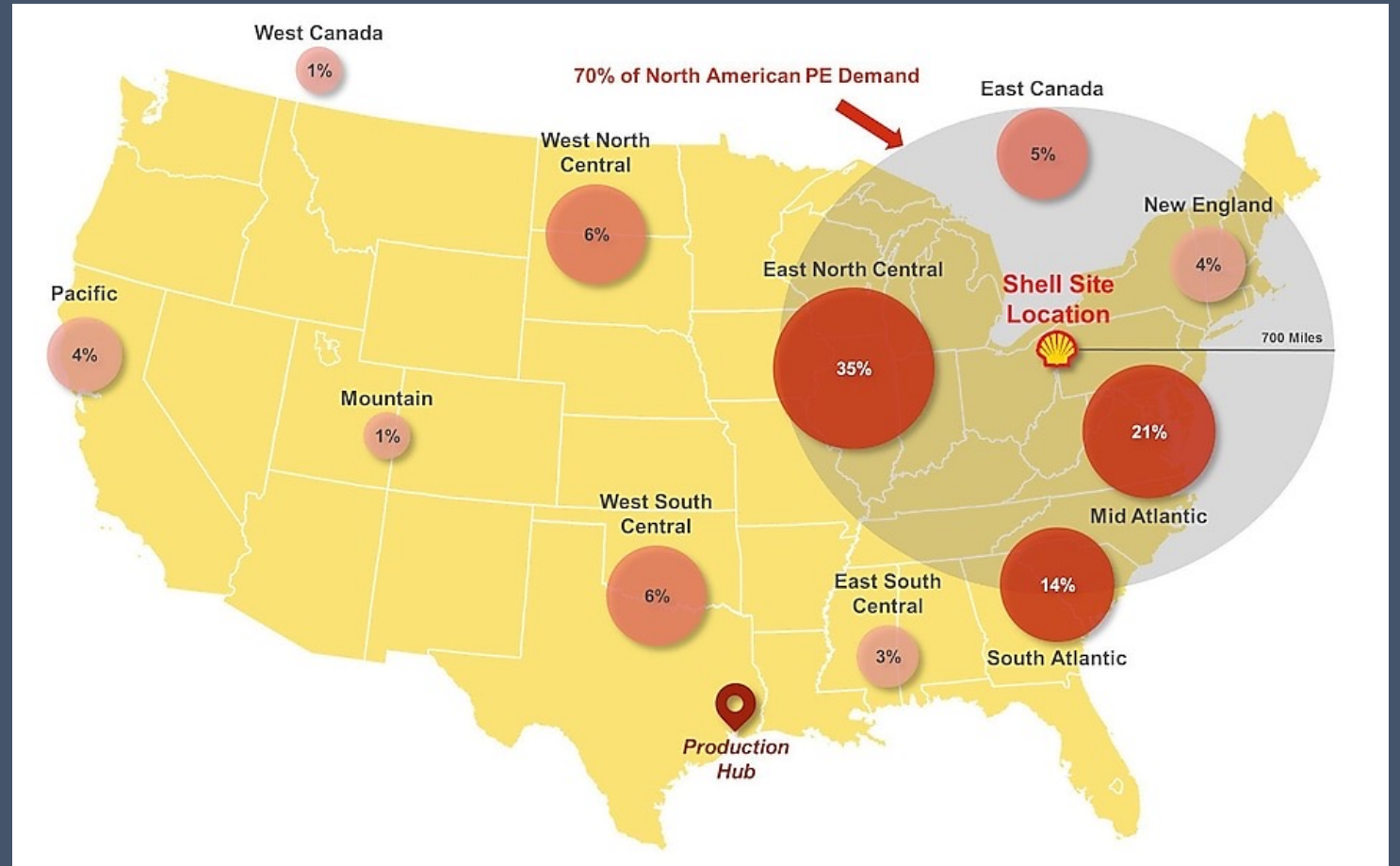
5 Varieties



We're working with plastics Manufacturers...

Shell Corporation on its new cracker plant:

“The location...ideal because more than 70% of North American polyethylene customers are within a 700-mile radius of Pittsburgh.”



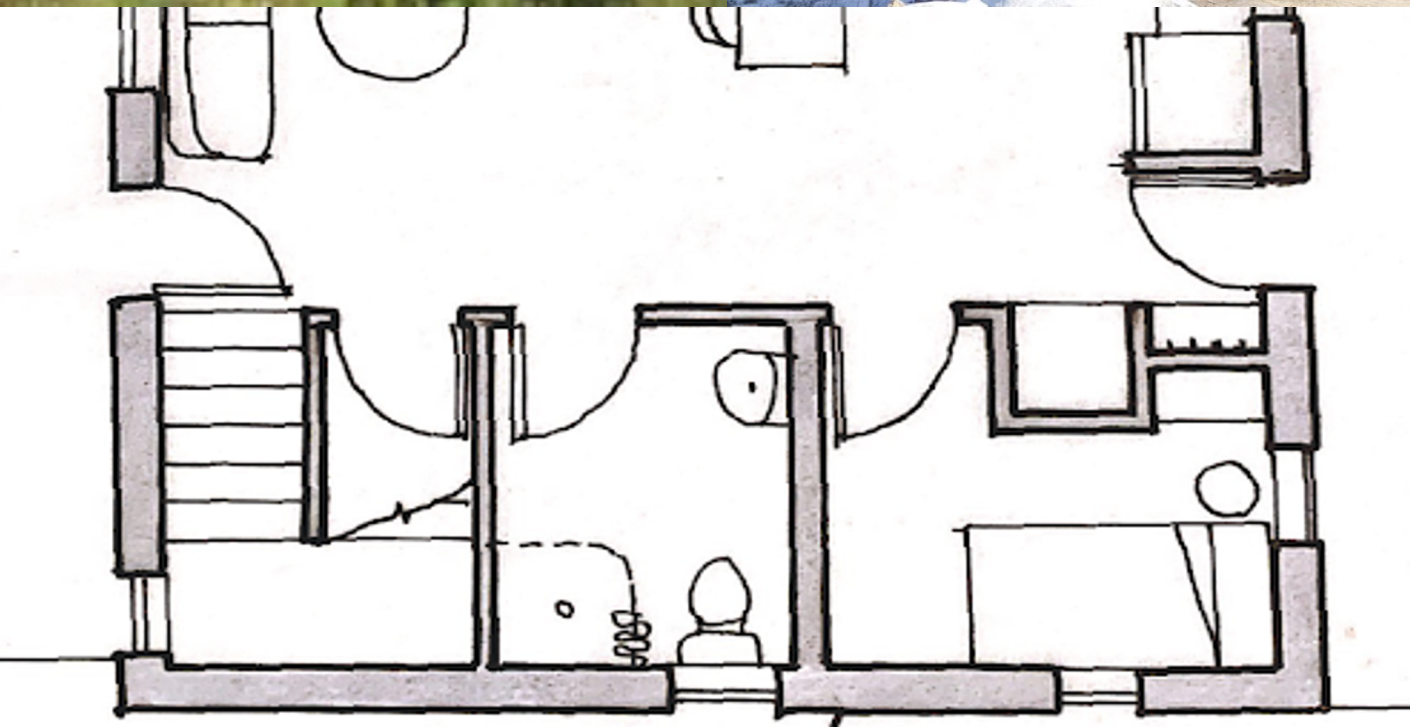
Source: Shell Press Release





pennsylvania
DEPARTMENT OF AGRICULTURE

Pennsylvania
is working
hard to
support hemp
production...



And then
reality set in!



But people
who work
for DON
don't turn
away from
challenges...



Anyway, it
was too
late to turn
back!



We pressed on,
taking on all
the major
issues with the
house...



We did what
DON always
does—relied
on
collaboration
with experts...

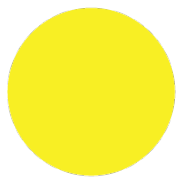


Volunteers offered their help...

A man with a beard and a black cap is working on a wooden structure, possibly a fence or a wall, using a tool. He is wearing a light blue t-shirt and gloves. A woman with curly hair, wearing a blue puffer vest and sunglasses, is looking on. They are outdoors, with a chain-link fence and a dark car visible in the background.

One even drove from New York...

THE NEW SCHOOL



PARSONS
HEALTHY
MATERIALS LAB



daltile[®]

columbia
FOREST PRODUCTS[®]
PureBond.[®]
HARDWOOD PLYWOOD

FLOYD



ARONSON'S
FLOOR COVERING

We are
grateful for
the support
we've
received...



PA Hemp
Promotion
Grant

HempLime is
installed!



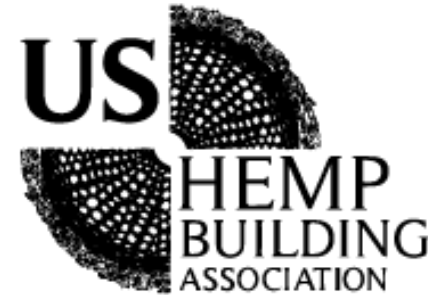
Our 2020
harvest was
used to
produce
HempWood™
flooring for
Project PA
Hemp Home



HempWood™
flooring using
hemp grown
15 minutes
away from the
house—truly
local!



pennsylvania
DEPARTMENT OF AGRICULTURE



Research and Testing: Helping Build the
Case for Inclusion in the Code



PA Hemp Building Materials Workshop





A Healthy Home: PA Hemp House

Featured on America By Design

MORE VIDEOS



32:57 / 37:17



YouTube



Featured on WTAE Pittsburgh

Awarded by Fast Company in the Materials Category



Benefits of Hemp-based Materials

Non-toxic, all natural, materials, which can be grown locally.

According to the CDC website, the air inside our homes is 3-5 times more toxic than outside air. We now spend 90% of our time indoors.

Traditional petrochemical-based materials off-gas, creating dust, which we ingest, inhale and absorb through our skin.

HempLime (Hempcrete) is non-structural, but passed ASTM Flamespread testing on a scale of 0-450 with a score of Zero!

HempLime “breathes”, passing moisture to the outside, eliminating mold potential.

PROJECT PA HEMP HOME



pennsylvania
DEPARTMENT OF AGRICULTURE



DON Welcomes Opportunities to Collaborate

Please Contact:
Kevin Huwe

khuwe@donsservices.org